

# PA-460 CENTRAL FOLDING do-it-yourself

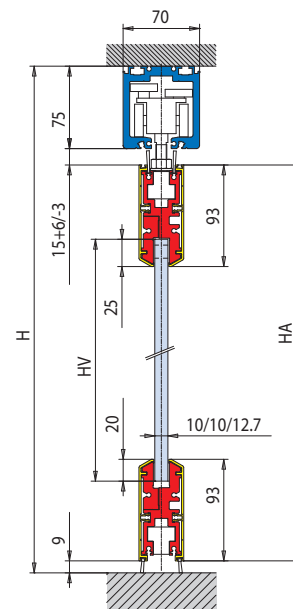
€ C.251

SCORREVOLI A SOFFIETTO / SLIDING CENTRE FOLDING / FALT-SCHIEBEWANDSYSTEME

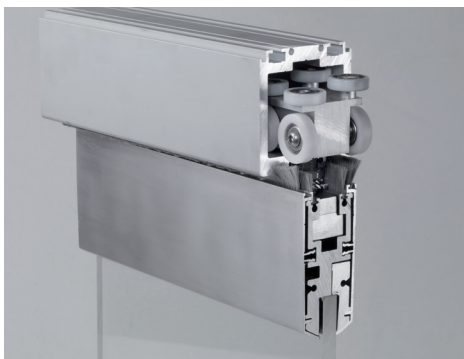


- Sistema modulare a soffietto con impacchettamento centrale completo di morsetti fermavetro (mm 250), veletta continua (mm 1200) da tagliare secondo necessità a cura del cliente, binario standard h=75 mm x L=70 mm e carrello con 8 ruote.
- Folding door system with central fold with glass fixing clamps (mm 250) and continuous covers (mm 1200) to be cut on the basis of client's requirements, and including standard rail standard h=75 mm x L=70 mm and carriage with 8 wheels.
- Faltschiebewandssystem mit mittlerer Faltung, Glashalteklammen(250 mm), kontinuierlicher Verkleidung (1200 mm) kundenspezifisch ablängbar, Standardlaufschiene h=75 mm x L=70 mm und Laufwagen mit 8 Rädern.

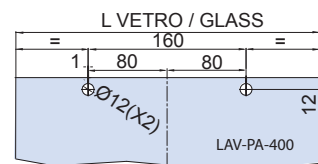
SCORREVOLI A SOFFIETTO  
SLIDING CENTRE SYSTEMS

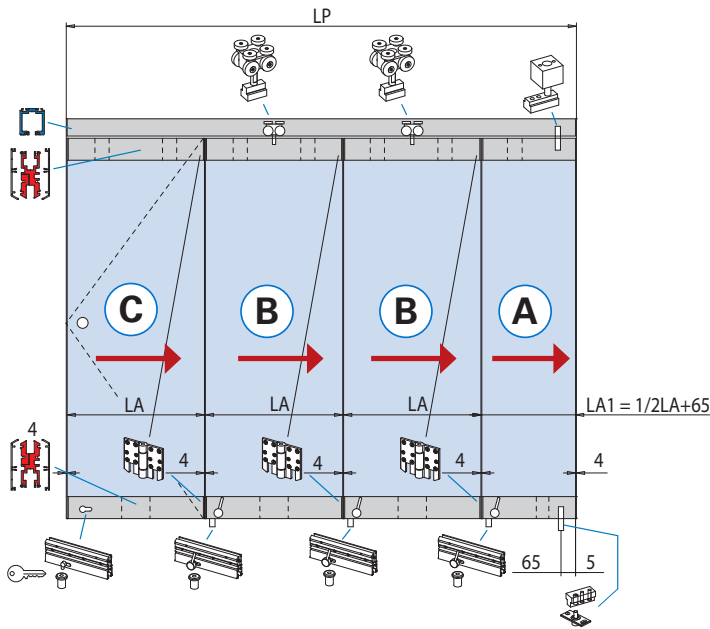
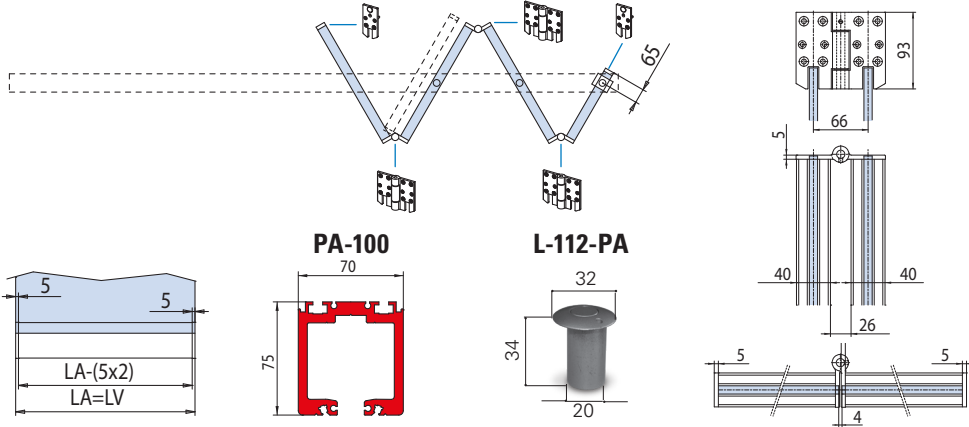
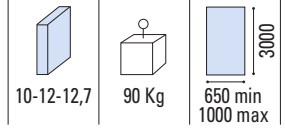
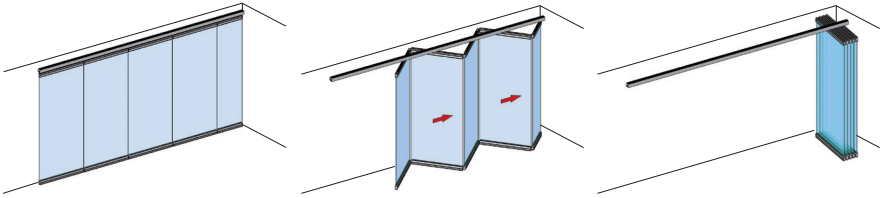


$HV = H - 240$



LAVORAZIONE VETRO  
GLASS PREPARATION  
GLASBEARBEITUNG





- Calcolo vetro
- Calculation glass
- Glasberechnung

$$At = 4 \times (N + 1)$$

$$X = Lp - At$$

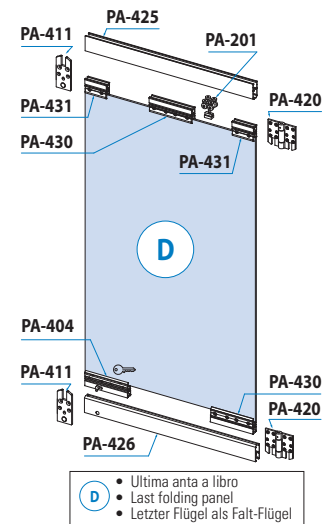
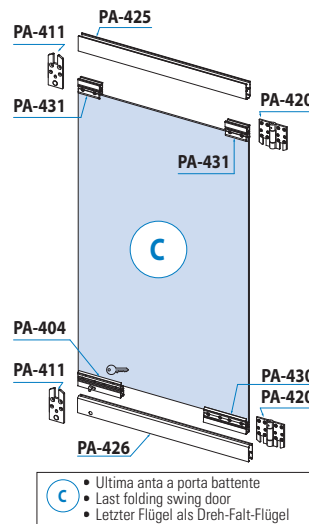
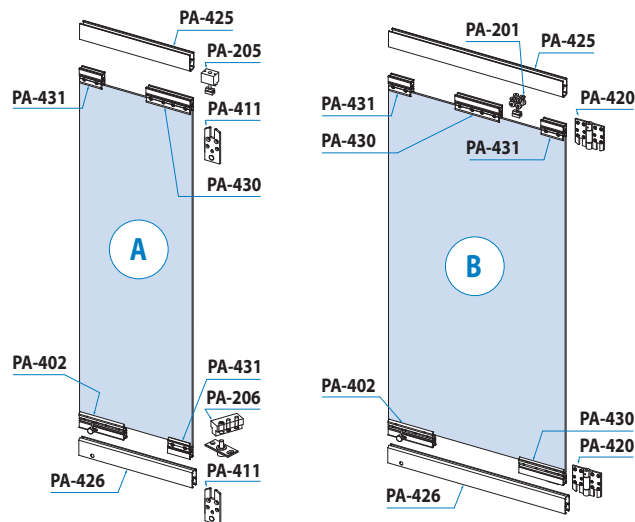
$$X = (N - 0,5) \times LA + 65$$

$$LA = LV = (X - 65) / (N - 0,5)$$

$$LA1 = LV1 = 1/2LA + 65$$

- (A)**
  - Prima anta a libro
  - First folding panel
  - Erster Faltelement
- (B)**
  - Anta intermedia a libro
  - Middle folding panel
  - Mittiges Faltelement
- (C)**
  - Ultima anta a libro
  - Last folding panel
  - Letzter Flügel

	PA-460 SET 3 (A)(B)(C)
	PA-460 SET 4 (A)(B)(B)(C)
	PA-460 SET 5 (A)(B)(B)(B)(C)
	PA-460 SET 6 (A)(B)(B)(B)(B)(C)



- (C)**
  - Ultima anta a porta battente
  - Last folding swing door
  - Letzter Flügel als Dreh-Falt-Flügel

- (D)**
  - Ultima anta a libro
  - Last folding panel
  - Letzter Flügel als Falt-Flügel

xla334-1 / xla334h / xla334e

<b>AN</b> Alluminio anodizzato Aluminium anodized Aluminium Silberfarbig	<b>At</b> Arie totali Total clearances Summe alle Abstände Glas/Wand	<b>N</b> Numero ante Numbers panels Anzahl der Elemente	<b>LP</b> Passaggio luce Clear opening width Lichte Durchgangsbreite	<b>LA = LV</b> Larghezza ante = Larghezza vetro Panel width = Glass width Flügelbreite = Glasbreite	<b>H</b> Altezza passaggio luce Clear opening height Lichte durchgangshöhe	<b>HV</b> Altezza vetro Glass height Glashöhe	<b>HA</b> Altezza anta Door height Tür Höhe
---	---	--	---	--	---	--	--